



AXIOM

B E R N H A R D T



AXIOM

B E R N H A R D T

With its contemporary appeal and meticulous attention to craftsmanship, Axiom has arrived on the scene, shifting the expectations of what a transitional furniture collection can accomplish. Right from the beginning, it's obvious Axiom refuses to play by the rules; veneers are merged with acrylic and metal accents, making an immediate—and sophisticated—statement. Two distinctive finishes, Linear White and Linear Gray, serve as the perfect complement to the linear wood grain found on these pieces. Accenting these is a hand-applied plaster in a White Linen finish. While Axiom offers clean lines and sleek forms throughout, additional design elements like ovals, triangular veneer patterns and inverted pyramids offer unique visual appeal. The cosmopolitan touches continue with stainless steel accents and hardware in a Brushed Silver finish. But Axiom's crowning achievement is that for all of its modern leanings, it remains warm, inviting, and entirely unforgettable.



MODERN SLANT

Axiom serves as an ideal transitional collection, and its contemporary leanings shine through with its clean lines and forms. But as you look closer, you'll also notice the unconventional but alluring choices made for the collection's finishes, accents, and hardware.



SHOWN:

998-E60/381-773 Round Dining Table

381-565 Side Chairs

381-566 Arm Chairs

381-870 Entertainment Console

381-344 Floor Mirror







DISTINCTIVE FINISHES

When it comes to Axiom's finishes, a trio of finishes blend seamlessly. The engineered faux anigre veneers make a truly original style statement, in silky smooth Linear White and Linear Gray finishes. While the White Linen plaster helps the collection to stand apart.



SHOWN:
381-134 Buffet
381-322 Mirror
381-356 Display Cabinet







METICULOUS CRAFTSMANSHIP

The Axiom collection has a striking mix of materials that includes plaster, acrylic, and metal. In another surprise, the low-sheen veneers are formed on pieces in unique triangular patterns for interest from any angle. Altogether the elements surprise and delight.



SHOWN:

381-021 Cocktail Table
381-127 Round Chairside Table
381-123 Round Chairside Table
381-565 Side Chair
381-344 Floor Mirror
N3697 Phoenix Sofa
N9013 Hyder Chairs









COSMOPOLITAN

Axiom's sleek sense of style is evident in the unique design elements it employs, too. Though ovals, triangular veneer patterns, and inverted pyramids immediately catch the eye, the clear acrylic and metal used on hardware offer a delicate, jewelry-like feel.



SHOWN:
381-119 Tall Chest
381-213 Oval Nightstand
381-050 Dresser
N1523 Micha Chair









SOPHISTICATED TOUCHES

Axiom's sophisticated feel is noticeable in its smaller details. Unique metal knobs and pulls in a Brushed Silver finish unite seamlessly with clear acrylic bar pulls, demonstrating how the collection tastefully breaks from furniture design norms.



SHOWN:

381-056 Dresser

381-322 Mirror

381-H09/FR09 Upholstered Panel Bed

381-236 Nightstand

N1523 Micha Chair

SHOWN:
381-H09/FR09 Upholstered Panel Bed
381-236 Nightstands
381-506 Benches



FEMININE APPEAL

Axiom's modern sensibilities are softened by a muted color palette that makes it far more inviting than its counterparts. Those hues, along with a unique material story that gives pieces depth and interest, are what make the collection truly special.







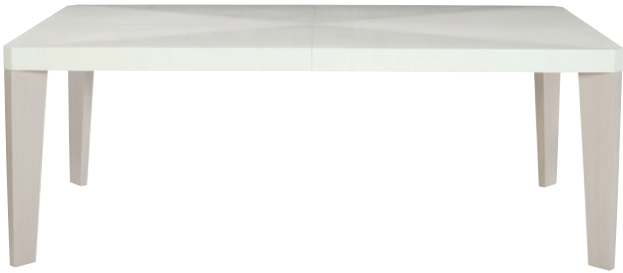
INDEX



381-222 DINING TABLE

W 82 (102-122) | D 44 | H 30 in.
W 208.28 (259.08-309.88) | D 111.76 | H 76.20 cm.

Poplar solids and engineered faux anigre veneers. Fancy face top in Linear White finish. Two 20" leaves - not fancy face. Linear Gray finish on legs. Adjustable glides.
pages Inside Front Cover, 4, 5



998-E60 ROUND DINING TABLE GLASS TOP
381-773 ROUND DINING TABLE BASE

Overall Diameter: 60 | H 30 in.
Overall Diameter: 152.40 | H 76.20 cm.

Poplar solids and engineered faux anigre veneers. Base has four leg posts and connecting circular top and base. Linear Gray finish on interior and exterior face, including top surface of circular top. Linear White finish on underside of top, both sides of leg posts and top surface of circular base. Adjustable glides.
Also available 998-O54P Round Dining Table Glass Top.
pages 2, 3



381-541 SIDE CHAIR

W 20-5/8 | D 25-13/16 | H 39 in.
W 52.39 | D 65.56 | H 99.06 cm.

Seat Height: 19 in. | 48.26 cm.
Seat Depth: 19-1/4 in. | 48.90 cm.
Fabric shown: B981-002
Upholstered seat and inside back panel with top stitching and welt around seat bottom. Upholstered outside back panel with welt. Linear Gray finish.
Also available in other fabrics excluding leathers, silks and pillow fabrics; order as 381-X41.
pages Inside Front Cover, 1, 4, 5, 23



381-542 ARM CHAIR

W 23-3/4 | D 25-11/16 | H 39 in.
W 60.33 | D 65.25 | H 99.06 cm.

Arm Height: 26-1/4 in. | 66.68 cm.
Seat Height: 19 in. | 48.26 cm.
Seat Depth: 19-1/4 in. | 48.90 cm.

Fabric shown: B981-002

Upholstered seat and inside back panel with top stitching and welt around seat bottom. Upholstered outside back panel with welt. Linear Gray finish.
Also available in other fabrics excluding leathers, silks and pillow fabrics; order as 381-X42.

pages 4, 5



381-565 SIDE CHAIR

W 23 | D 25-1/8 | H 39-3/8 in.
W 58.42 | D 63.82 | H 100.01 cm.

Seat Height: 19 in. | 48.26 cm.
Seat Depth: 19 in. | 48.26 cm.

Fabric shown: B981-002

Upholstered seat and inside back with top stitching and welt around seat bottom. Upholstered outside back with welt. Linear Gray finish.
Also available in other fabrics excluding leathers, silks and pillow fabrics; order as 381-X65.

pages 2, 8, 11, 35, Inside Back Cover



381-566 ARM CHAIR

W 23 | D 25-1/8 | H 39-3/8 in.
W 58.42 | D 63.82 | H 100.01 cm.

Arm Height: 24-3/8 in. | 61.91 cm.
Seat Height: 19 in. | 48.26 cm.
Seat Depth: 18-3/4 in. | 47.63 cm.

Fabric shown: B981-002

Upholstered seat and inside back with top stitching and welt around seat bottom. Upholstered outside back with welt. Linear Gray finish.
Also available in other fabrics excluding leathers, silks and pillow fabrics; order as 381-X66.

pages 2, 3



381-134 BUFFET

W 78-7/16 | D 19 | H 32 in.
W 199.23 | D 48.26 | H 81.28 cm.

Poplar solids and engineered faux anigre veneers. Linear Gray finish on case with Linear White finish on end panels. Four doors with cast shaped overlays in White Linen finish with soft/self-closing hinges. Behind end doors is one adjustable/removable shelf. Behind paired center doors are two drawers and two open compartments. Top drawer has silverware insert. Second drawer has wrapped pad. Adjustable glides. Anti-tip kit.
pages 4, 6



381-356 DISPLAY CABINET

W 48 | D 18-5/8 | H 88 in.
W 121.92 | D 47.31 | H 223.52 cm.

Poplar solids and engineered faux anigre veneers. Linear Gray finish on exterior of case. Linear White finish on interior of case.
UPPER CASE: Two doors with inset tempered glass panels. Behind doors are three adjustable/removable glass shelves with polished edge and plate groove, two halogen lights with touch dimmer switch and fancy face veneered back panel.
LOWER CASE: Two fancy face doors. Behind left door are two adjustable/removable shelves with removable wine bottle supports and one drawer with wrapped pad. Behind right door is one adjustable/removable shelf and one drawer with wrapped pad. Adjustable glides. Anti-tip kit.
pages Inside Front Cover, 4, 5, 6, 7



381-H09/FR09**UPHOLSTERED PANEL BED (KING)**

Overall: W 80-1/4 | D 88-1/8 | H 76 in.

Overall: W 203.84 | D 223.84 | H 193.04 cm.

Fabric shown: B539-000

Slat Height: 7-1/2 in. | 19.05 cm.

Engineered faux anigre veneers in Linear Gray finish.

Wood-framed headboard with four upholstered, inset horizontal panels - no welt. Wood-framed footboard with upholstered panel - no welt. Wood side rails. Three slat support system with adjustable center supports.

Headboard cannot be used alone.

Also available in other fabrics excluding leathers, silks and pillow fabrics; order as 381-XH09/XFR9. pages 19, 20, 21

Also available:

381-H07/FR07 UPHOLSTERED PANEL BED (QUEEN)

Overall: W 64-1/4 | D 88-1/8 | H 72 in.

Overall: W 163.20 | D 223.84 | H 182.88 cm.

Also available in other fabrics excluding leathers, silks and pillow fabrics; order as 381-XH07/XFR7.

381-H08/FR08 UPHOLSTERED PANEL BED (CALIFORNIA KING)

Overall: W 76-1/4 | D 92-1/8 | H 76 in.

Overall: W 193.68 | D 234.00 | H 193.04 cm.

Also available in other fabrics excluding leathers, silks and pillow fabrics; order as 381-XH08/XFR8.

381-H66/FR66**UPHOLSTERED PANEL BED (KING)**

Overall: W 82-7/8 | D 92-3/8 | H 64 in.

Overall: W 210.50 | D 234.63 | H 162.56 cm.

Fabric shown: B981-002

Slat Height: 10-3/4 in. | 27.31 cm.

Engineered faux anigre veneers in Linear Gray finish.

Wood-framed, winged headboard with six upholstered panels - no welt. Wood footboard and side rails. Three slat support system with adjustable center supports.

Headboard cannot be used alone.

Also available in other fabrics excluding leathers, silks and pillow fabrics; order as 381-XH66/FR66. pages Front Cover, 16, 17, Back Cover

Also available:

381-H64/FR64 UPHOLSTERED PANEL BED (QUEEN)

Overall: W 66-7/8 | D 92-3/8 | H 64 in.

Overall: W 169.86 | D 234.63 | H 162.56 cm.

Also available in other fabrics excluding leathers, silks and pillow fabrics; order as 381-XH64/FR64.



381-050 DRESSER

W 66 | D 20 | H 37 in.
W 167.64 | D 50.80 | H 93.98 cm.

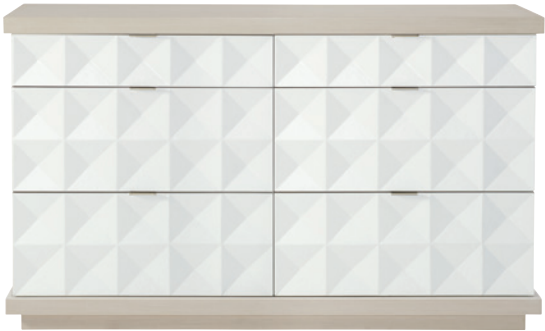
Poplar solids and engineered faux anigre veneers. Linear White finish on case with Linear Gray finish on base and legs. Seven drawers with fancy face drawer fronts. Center support leg. Adjustable glides. Anti-tip kit.
Note: Dresser is bored for optional 381-322 mirror support attachment.
pages 15, 17



381-056 DRESSER

W 65-9/16 | D 19 | H 38-1/2 in.
W 166.53 | D 48.26 | H 97.79 cm.

Poplar solids and engineered faux anigre veneers. Linear Gray finish on top, frame and base. Linear White finish on end panels. Six drawers with cast shaped overlays on drawer fronts in White Linen finish. Adjustable glides. Anti-tip kit.
Note: Dresser is bored for optional 381-322 mirror support attachment.
page 18



381-213 OVAL NIGHTSTAND

W 36 | D 21 | H 30 in.
W 91.44 | D 53.34 | H 76.20 cm.

Engineered faux anigre veneers. Two drawers with fancy face drawer fronts. Adjustable glides. Anti-tip kit. Linear White finish.
Note: Back of case is finished.
pages 14, 16



381-228 NIGHTSTAND

W 26 | D 19 | H 29-3/4 in.
W 66.04 | D 48.26 | H 75.57 cm.

Poplar solids and engineered faux anigre veneers. Linear White finish on case and fancy face drawer fronts. Linear Gray finish on base and legs. Three drawers. Adjustable glides. Anti-tip kit.



381-229 NIGHTSTAND

W 34 | D 19 | H 29-3/4 in.
W 86.36 | D 48.26 | H 75.57 cm.

Poplar solids and engineered faux anigre veneers. Linear White finish on case and fancy face drawer fronts. Linear Gray finish on base and legs. Three drawers. Adjustable glides. Anti-tip kit.
pages Front Cover, 17, 22, Back Cover



381-236 NIGHTSTAND

W 33-5/8 | D 19 | H 32-1/8 in.
W 85.41 | D 48.26 | H 81.60 cm.

Poplar solids and engineered faux anigre veneers. Linear Gray finish on case with Linear White finish on end panels. Three drawers with cast shaped overlay drawer fronts in White Linen finish. Plinth base. Adjustable glides. Anti-tip kit.
pages 19, 20, 21, 22



381-119 TALL CHEST

W 38 | D 19 | H 53-3/4 in.
W 96.52 | D 48.26 | H 136.53 cm.

Poplar solids and engineered faux anigre veneers. Linear White finish on case and fancy face drawer fronts. Five drawers. Linear Gray finish on bottom case border and plinth base. Anti-tip kit. Adjustable glides.
page 14



381-011 SQUARE COCKTAIL TABLE

W 40 | D 40 | H 17 in.
W 101.60 | D 101.60 | H 43.18 cm.

Poplar solids and engineered faux anigre veneers. Fancy face top with Linear White finish on top and sides. Plinth base in Linear Gray finish. Heavy duty, non-marring ball casters.
pages 8, 9



381-021 COCKTAIL TABLE

W 54 | D 31 | H 18 in.
W 137.16 | D 78.74 | H 45.72 cm.

Poplar solids and engineered faux anigre veneers. Fancy face top with Linear White finish on top and end panels. One shelf in Linear White finish - not fancy face. Linear Gray finish on side borders of top and shelf - side and bottom borders of end panels. Adjustable glides.
pages 10, 12, 13



381-122 ROUND CHAIRSIDE TABLE

Diameter: 16 | H 24 in.
Diameter: 40.64 | H 60.96 cm.

Maple veneer top in White Linen finish. Engineered faux anigre veneer base in Linear Gray finish. Adjustable glides.
pages 8, 9



381-123 ROUND CHAIRSIDE TABLE

Diameter: 12 | H 22 in.
Diameter: 30.48 | H 55.88 cm.

Fancy face top and base of poplar solids and engineered faux anigre veneers in Linear Gray finish. Three tubular stainless steel legs in Brushed Silver finish. Adjustable glides.
pages 8, 10, 12



381-125 ROUND CHAIRSIDE TABLE

Diameter: 24 | H 24 in.
Diameter: 60.96 | H 60.96 cm.

Poplar solids and engineered faux anigre veneers. Tubular stainless steel framed top in Brushed Silver finish with inset tempered glass top. Two fancy face, curved end panels in Linear White finish. Fancy face bottom shelf and base in Linear Gray finish. Open area between panels - front to back. Adjustable glides.
pages 13, 22, 23



381-127 ROUND CHAIRSIDE TABLE

Diameter: 28 | H 26 in.
Diameter: 71.12 | H 66.04 cm.

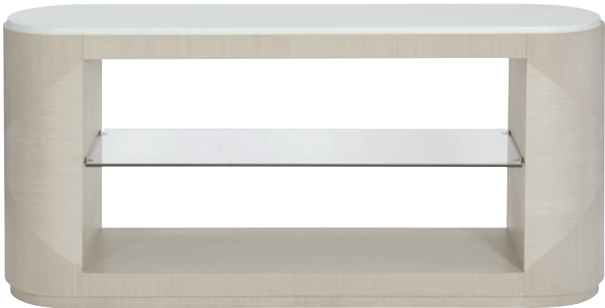
Poplar solids and engineered faux anigre veneers. Fancy face top and drawer fronts. Three drawers. Plinth base. Adjustable glides. Linear White finish.
Note: Back of case is finished.
pages 10, 12, 22



381-910 CONSOLE TABLE

W 64 | D 16 | H 30 in.
W 162.56 | D 40.64 | H 76.20 cm.

Poplar solids and engineered faux anigre veneers. Linear Gray finish on case and Linear White finish on top. Fancy face end panels. One adjustable/removable, tempered glass shelf and one fixed wood bottom shelf. Adjustable glides.
page 23



381-510 DESK

W 58 | D 30-3/4 | H 30 in.
W 147.32 | D 78.11 | H 76.20 cm.

Poplar solids and engineered faux anigre veneers. Tubular stainless steel top frame in Brushed Silver finish with inset tempered glass top. Curved, fancy face end panels in Linear White finish. Open front-to-back design between panels with a shaped bottom shelf and base frame in Linear Gray finish. Adjustable glides.
pages 8, Inside Back Cover



381-506 BENCH

W 28 | D 18 | H 19 in.

W 71.12 | D 45.72 | H 48.26 cm.

Fabric shown: B539-000

Upholstered box seat with top stitching - no welt. Solid stainless steel frame with curved, open end panels in Brushed Silver finish. Adjustable glides.

Also available in other fabrics excluding leathers, silks and pillow fabrics; order as 381-X06.

pages 20, 21

**381-508 BENCH**

W 56 | D 18 | H 18 in.

W 142.24 | D 45.72 | H 45.72 cm.

Fabric shown: B981-002

Upholstered seat with top stitching and bottom welt. Fancy face curved ends of poplar solids and engineered faux anigre veneers. Open in center of base. Adjustable glides. Linear White finish.

Also available in other fabrics excluding leathers, silks and pillow fabrics; order as 381-X08.

pages Front Cover, 16, 17, Back Cover

**381-322 MIRROR**

W 52 | D 1-1/2 | H 36 in.

W 132.08 | D 3.81 | H 91.44 cm.

Poplar solids and engineered faux anigre veneer wood frame. Mirrored glass with 1" bevel. Can be hung vertically or horizontally. Linear Gray finish.

Note: Due to weight, must be hung on stud.

Note: Mirror supports included for optional use with 381-050 and 381-056 dressers.

pages 4, 6, 18, 19, Back Cover



381-344 FLOOR MIRROR

W 38-1/2 | D 2-7/8 | H 82-1/2 in.
W 97.79 | D 7.30 | H 209.55 cm.

Poplar solids and engineered faux anigre veneers. Wood frame with inner and outer frame edges in Linear White finish and cast shaped overlays in White Linen finish. Mirrored glass with beveled edge. Anti-tip kit.

Note: Due to weight, must be hung on stud.
pages 3, 11



381-870 ENTERTAINMENT CONSOLE

W 72 | D 18 | H 31 in.
W 182.88 | D 45.72 | H 78.74 cm.

TV Area W 70 | D 16 in.
W 177.80 | D 40.64 cm.

Poplar solids and engineered faux anigre veneers in Linear Gray finish. Three open front compartments located above and below doors (6 compartments total), each with one covered grommet hole. Four fancy face doors in Linear White finish. Behind end doors is one adjustable/removable shelf and ventilation holes in back panel. Behind center paired doors is an open compartment and one drawer with wrapped pad. Plinth base. Adjustable glides. Anti-tip kit.

pages 3, 35





SIGNATURE ELEMENTS



INSPIRATION

A glamorous transitional collection with a modern slant, Axiom offers a unique material story. Engineered faux anigre veneers are combined with plaster, acrylic and metal, giving pieces depth and interest.



ARTISTRY

Forms are primarily modern and clean, but there are some interesting design elements, such as ovals, triangular veneer patterns, and combinations of two veneers. A 3-D motif of an inverted pyramid offers visual appeal.



ACCENTS

Stainless steel accents feature a Brushed Silver finish that works in concert with the clear acrylic in the group. These are just two more examples that illustrate Axiom's penchant for sophisticated touches.



HARDWARE

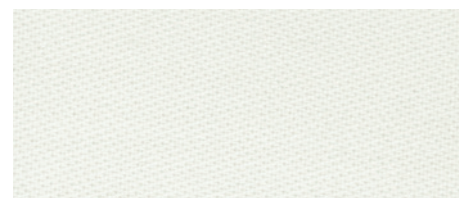
Clear acrylic is combined with metal for hardware with a jewelry-like feel that's fresh and unique. Other knobs and pulls are created from nickel-plated zinc in a lustrous Brushed Silver finish.

FABRICS

The Linear White and Linear Gray finishes, along with Brushed Silver accents and hardware, demand subtle complementary colors. The whites and grays found on fabrics keep the look clean and offer an ideal balance, letting the Axiom collection's uncommon combination of materials and finishes take center stage.



B981-002



B539-000

UPHOLSTERY FEATURED

N1623L Naomi Chair
Leather No. 209-000
pages 8, 9

N3697 Phoenix Sofa
Fabric No. 1324-014
pages 10, 12, 22

N9013 Hyder Chair
Fabric No. 1382-010
pages 10, 12, 13, 22, 23

N42220 Silas Chair
*Available only as shown
pages 13, 22, 23*

N1523 Micha Chair
Fabric No. 1252-002
page 15

N1523 Micha Chair
Fabric No. 1066-011
page 18

N3823 Cosway Chair
Fabric No. 1066-011
page 23

ADDITIONAL IMAGES FEATURED

COVER: 381-H66/FR66 Upholstered Panel Bed, 381-229 Nightstand, 381-508 Bench, 381-322 Mirror

INSIDE FRONT COVER: 381-222 Dining Table, 381-541 Side Chairs, 381-356 Display Cabinet

PAGES 4-5: 381-222 Dining Table, 381-541 Side Chairs, 381-542 Arm Chairs, 381-356 Display Cabinet, 381-134 Buffet, 381-322 Mirror

PAGES 8-9: 381-011 Square Cocktail Table, 381-123 Round Chairside Table, 381-122 Round Chairside Table, 381-510 Desk, 381-565 Side Chair, N1623L Naomi Chairs

PAGES 12-13: 381-021 Cocktail Table, 381-123 Round Chairside Table, 381-125 Round Chairside Table, 381-127 Round Chairside Table, N3697 Phoenix Sofa, N9013 Hyder Chairs, N42220 Silas Chairs

PAGES 16-17: 381-H66/FR66 Upholstered Panel Bed, 381-213 Oval Nightstand, 381-229 Nightstand, 381-050 Dresser, 381-508 Bench

PAGES 22-23: 381-127 Round Chairside Table, 381-236 Nightstand, 381-125 Round Chairside Table, 381-229 Nightstand, 381-541 Side Chairs, 381-910 Console Table, N3697 Phoenix Sofa, N9013 Hyder Chair, N42220 Silas Chairs, N3823 Cosway Chair

PAGES 35: 381-870 Entertainment Console, 381-565 Side Chair

INSIDE BACK COVER: 381-510 Desk, 381-565 Side Chair

WOODS, FINISHES & MATERIALS

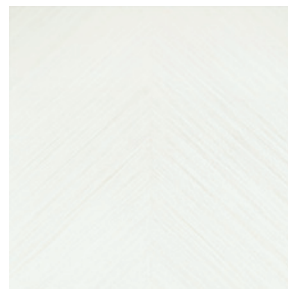
Axiom's engineered faux anigre veneers come in two silky yet low-sheen finishes: Linear White and Linear Gray. A hand-applied plaster in a White Linen finish serves as the perfect complement. Rounding out the look is a unique mix of materials that includes plaster, acrylic and metal, which only adds to Axiom's glamorous appeal.



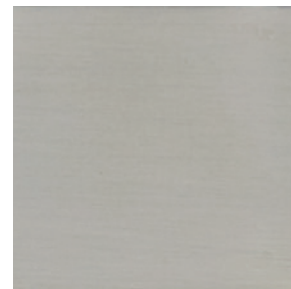
Linear White



Linear Gray



White Linen Plaster



Brushed Silver



Many high quality, natural materials, such as wood, veneer, glass, rubber, metal, plastic, cloth and/or stone, are used in our products and may reflect grain, vein or color variations. These variations are inherent in their species and enhance the unique beauty of each piece of furniture. Due to the photographic and printing processes used in the creation of this catalog, the finish and fabric colors displayed may vary from actual finish and fabric colors. Authorized Bernhardt retailers carry a variety of our furniture pieces and collections, so please contact them about the specific products at their location. Bernhardt uses materials and resources sourced globally to ensure a quality product. Specifications subject to change without notice. Copyright © 2018 Bernhardt Furniture Company. Printed in the USA 3/2018 GVS 4.8K.



